



britishpower[™]
international

design and advisory solutions to the power sector



This award winning innovative solution has been developed by BPI's design team.

It is unique and cost effective and assists developers to achieve a viable point of connection for their schemes.

The Point Of Connection (POC) mast offers a viable solution providing significant design, installation, maintenance, health and safety, environment and cost benefits.

Suitable for overhead line distributed generation connections operating from 11kV to 132kV.

Can be connected to both tension or suspension towers with a single or dual circuit arrangement.

Minimises risk to site personnel

- Reduced time spent working at height; connected to OHL by a 4 man team in 3 days
- Made safe in less than 1 hour
- No requirement to replace / modify existing tower

Cost effective

- Typical saving to developer - £1.5m
- Designed and manufactured in the UK

Minimum foot print

- For the majority of 132kV installations up to 50m high, the base size at ground level is less than 3m²
- Substation equipment can be adjacent to the POC-MAST[™]

Minimum outage requirements

- Depending on the connection configuration most OHL connections can be achieved in less than 1 day
- No requirement for outages to construct complex OHL diversions

Minimum environmental and visual impact

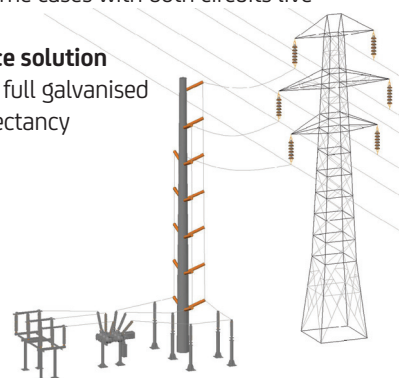
- The POC-MAST[™] design produces minimal visual impact
- No OHL diversions, with minimal erection techniques and minimal impact on the environment
- In many cases there is no need for crane erection-the mast is lifted with a hydraulic arm

No need for circuit diversion or outage

- POC-MAST[™] can be erected adjacent to the existing structure, in some cases with both circuits live

Low maintenance solution

- POC-MAST[™] is full galvanised with a life expectancy of +40 years



Contact Danielle on:

0845 168 7029

info@bpienergy.com

www.bpienergy.com

